



How to play the game: Use simple long algebraic for your answers, i.e., e2-e4 instead of e4; g1-f3 instead of Nf3; "x" "#" "+" as well as piece designations are unnecessary. The format is xx-xx. The first two digits being the "from" square; the second two digits being the "to" square. Don't forget the dash in between!

Your score is 0%.

Questions answered correctly first time: 0/25

You have completed the game.

Show questions one by one

1.



White Mates In 3 with what first move?

f4-d5

2.



Black Mates In 3 with what first move?

g7-g6

3.



White Mates In 4 with what first move?

d3-g6

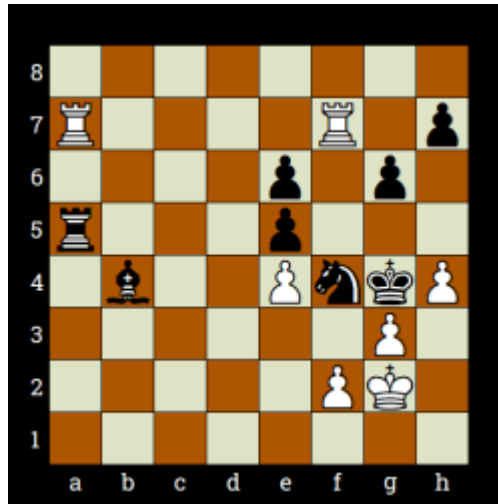
4.



White Mates In 2 with what first move?

f8-f6

5.



White Mates In 3 with what first move?

f7-f4

6.



White Mates In 3 with what first move?

e5-g6

7.



Black Mates In 2 with what first move?

b4-c2

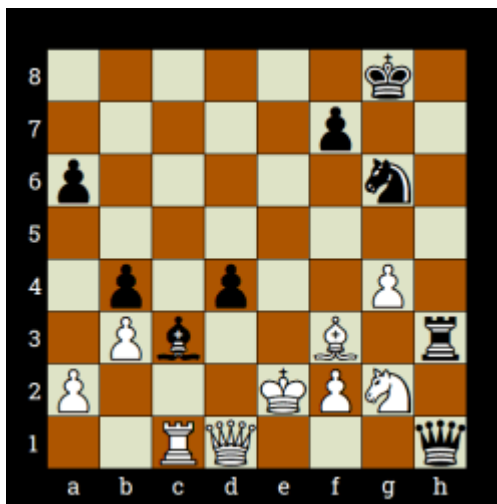
8.



White Mates In 2 with what first move?

h4-e4

9.



Black Mates In 3 with what first move?

g6-f4

10.



White Mates In 3 with what first move?

h5-h6

11.



Black Mates In 3 with what first move?

g6-g3

12.



White Mates In 3 with what first move?

f6-f7

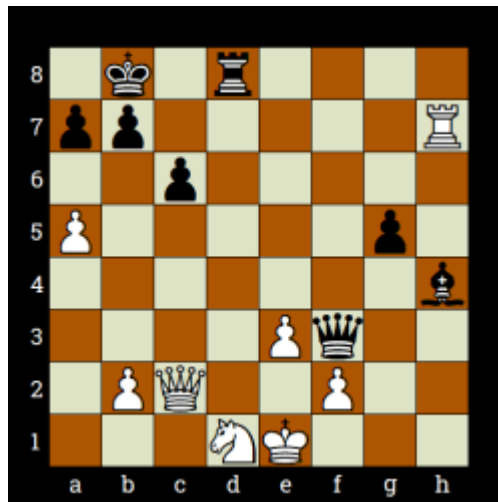
13.



White Mates In 3 with what first move?

h6-g7

14.



Black Mates In 2 with what first move?

d8-d1

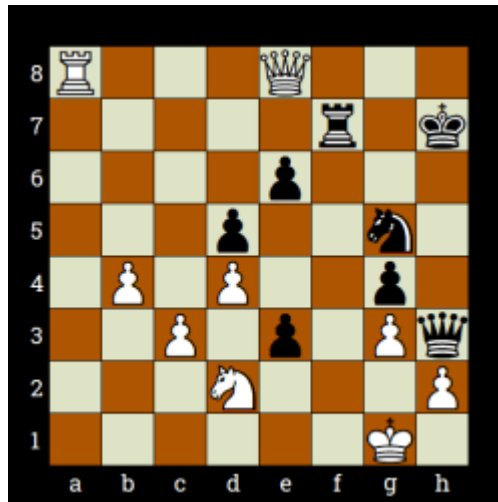
15.



White Mates In 6 with what first move?

h5-h6

16.



Black Mates In 3 with what first move?

f7-f1

17.



White Mates In 5 with what first move?

g1-g8

18.



Black Mates In 2 with what first move?

h4-h2

19.



White Mates In 2 with what first move?

d1-g4

20.



Black Mates In 3 with what first move?

f2-g2

21.



White Mates In 3 with what first move?

d3-d8

22.



White Mates In 4 with what first move?

c3-h8

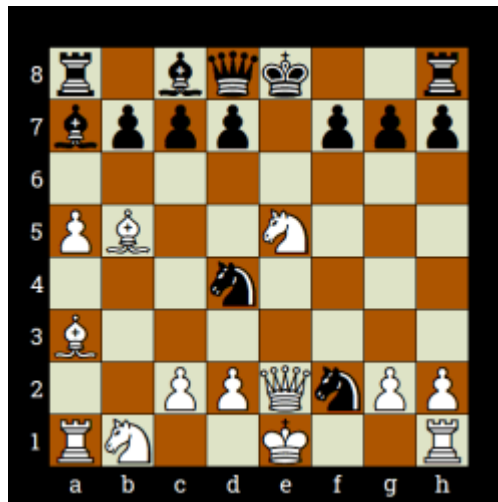
23.



White Mates In 2 with what first move?

d5-d8

24.



White Mates In 2 with what first move?

e5-d7

25.



Black Mates In 5 with what first move?

e8-e2
